

MONTHLY MEMBERSHIP PROGRESS REPORT

LOCATION ILLINOIS

District 1 BK

Results as of: 7/31/2023

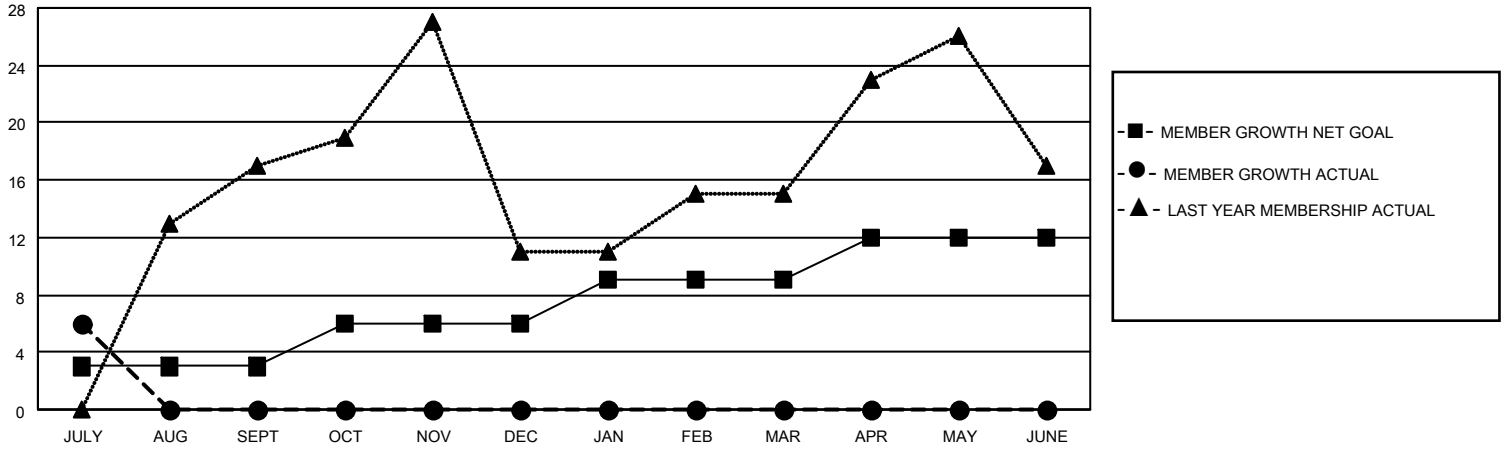
Clubs			
RESULTS FOR 2023-2024			
QUARTER	NEW CLUB GOAL	NEW CLUBS	DROPPED CLUBS
JULY/AUG/SEPT	0	0	0
OCT/NOV/DEC	0	0	0
JAN/FEB/MAR	0	0	0
APR/MAY/JUNE	0	0	0

Members			
RESULTS FOR 2023-2024			
QUARTER	MEMBER GROWTH NET GOAL	MEMBER GROWTH ACTUAL	DROPPED MEMBERS ACTUAL (including transfers)
JULY/AUG/SEPT	3	16	10
OCT/NOV/DEC	3	0	0
JAN/FEB/MAR	3	0	0
APR/MAY/JUNE	3	0	0

GOALS AND ACTUAL NEW CLUBS CUMULATIVE



GOALS AND ACTUAL MEMBERS CUMULATIVE



DROPPED CLUBS: 0

9 CLUBS OF 59 ADDED 1 OR MORE NEW MEMBERS

GENDER DISTRIBUTION

MALE	1,302 (74.49%)
FEMALE	446 (25.51%)
NON BINARY	0 (0.00%)
PREFER NOT TO ANSWER	0 (0.00%)

DROPPED MEMBERS

[CLICK HERE FOR CUMULATIVE MEMBERSHIP DATA](#)

DECEASED	2
CLUB CANCELLED	0
OTHER	8
TOTAL	10

TOTAL FAMILY UNIT MEMBERS 269

FAMILY MEMBERS PAYING HALF DUES 135